

Coaxial

Power Splitter/Combiner

ZN2PD-9G

2 Way-0° 50Ω 1700 to 9000 MHz



Maximum Ratings

Operating Temperature	-55°C to 100°C
Storage Temperature	-55°C to 100°C
Power Input (as a splitter)	10W max.
Internal Dissipation	0.125W max.

Coaxial Connections

SUPPORT	S
PORT 1	1
PORT 2	2

Features

- very wideband, 1700 to 9000 MHz
- low insertion loss, 0.5 dB typ.
- good isolation, 22 dB typ.
- up to 10W power input as splitter
- excellent amplitude unbalance, 0.1 dB typ.
- excellent phase unbalance, 1 deg. typ.
- rugged shielded case

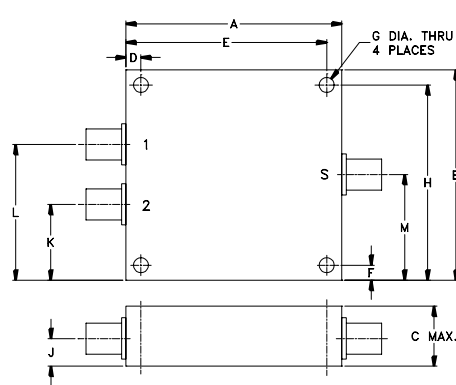
Applications

- UHF/VHF
- PCS/DCS
- defense & federal communications
- wireless

CASE STYLE: VVV180

Connectors	Model	Price	Qty.
SMA	ZN2PD-9G-S	\$69.95	(1-9)

Outline Drawing



Outline Dimensions (inch/mm)

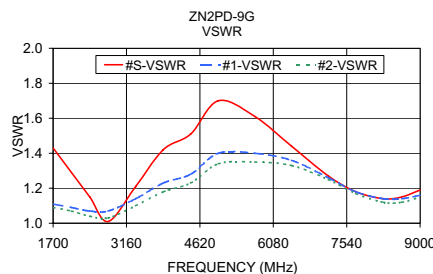
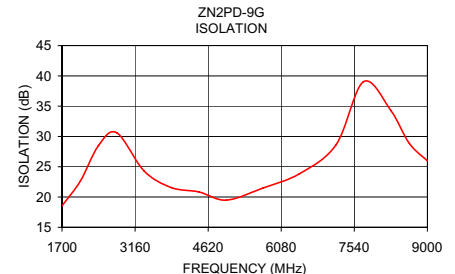
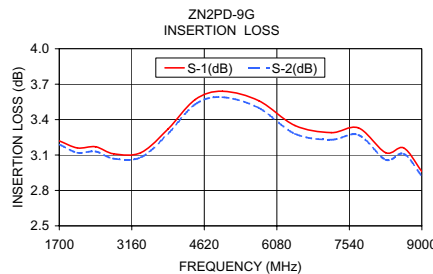
A	B	C	D	E	F	G	
1.80	1.75	.66	.125	1.675	.125	.125	
45.72	44.45	16.76	3.18	42.55	3.18	3.18	
H	J	K	L	M		wt	
1.625	.31	.63	1.13	.88		grams	
41.28	7.87	16.00	28.70	22.35		34	

Splitter Electrical Specifications

FREQ. RANGE (MHz)	ISOLATION (dB)		INSERTION LOSS(dB) ABOVE 3.0 dB		PHASE UNBALANCE (Degrees)	AMPLITUDE UNBALANCE (dB)	VSWR (:1)			
	Typ.	Min.	Typ.	Max.			S		OUT	
f _L -f _U					Max.	Max.	Typ.	Max.	Typ.	Max.
1700-9000	22	15	0.5	1.4	4	0.6	-	-	-	-

Typical Performance Data

Frequency (MHz)	Insertion Loss (dB)		Amplitude Unbalance (dB)	Isolation (dB)	Phase Unbalance (deg.)	VSWR S	VSWR 1	VSWR 2
	S-1	S-2						
1700.00	3.22	3.19	0.03	18.55	0.48	1.43	1.11	1.09
2065.00	3.16	3.12	0.04	22.62	0.57	1.29	1.09	1.07
2430.00	3.17	3.13	0.04	28.51	0.66	1.15	1.07	1.04
2795.00	3.11	3.07	0.04	30.61	0.66	1.01	1.07	1.03
3342.50	3.12	3.08	0.05	24.27	0.57	1.21	1.14	1.10
3890.00	3.32	3.28	0.04	21.55	0.65	1.42	1.23	1.18
4437.50	3.57	3.53	0.04	20.84	0.76	1.51	1.28	1.23
4985.00	3.64	3.59	0.05	19.48	0.92	1.70	1.40	1.34
5715.00	3.56	3.50	0.06	21.48	1.18	1.61	1.40	1.35
6445.00	3.35	3.28	0.07	23.84	1.11	1.44	1.36	1.33
7175.00	3.29	3.23	0.06	28.64	1.11	1.27	1.26	1.25
7722.50	3.33	3.27	0.06	39.04	1.23	1.18	1.18	1.17
8270.00	3.12	3.06	0.05	34.28	1.16	1.14	1.14	1.12
8635.00	3.16	3.11	0.05	28.90	1.35	1.15	1.14	1.12
9000.00	2.96	2.92	0.04	25.96	1.51	1.19	1.16	1.15



electrical schematic

